

COLLECTION NAME: SHERPA

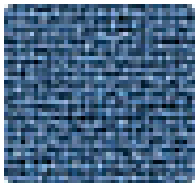
Content: 100% Marquesa Lana

Fire Code: Meets Cal 117 Fire Code, UFAC Class 1, NFPA 260

Cleaning: Use water based or solvent based cleaners

PRICING GRADE: A

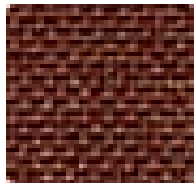
Abrasion: 250,000 Double Rubs



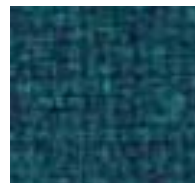
ACADEMY BLUE



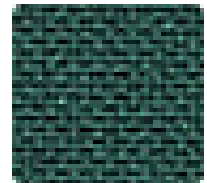
AMBER



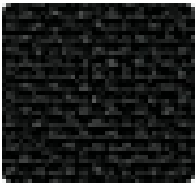
AUTUMN



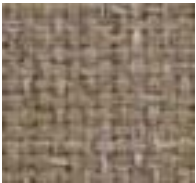
BAYVILLE



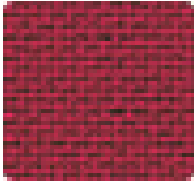
BILLARD



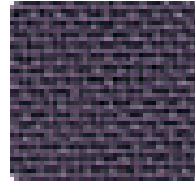
BLACK



BROWN HAZE



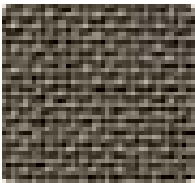
CARDINAL



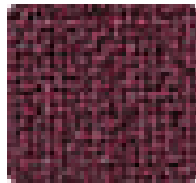
CONCORD



DARK BLUE



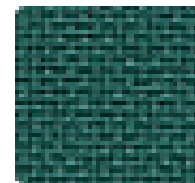
GARGOYLE



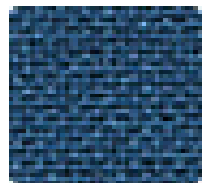
GRAPE



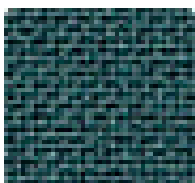
GREY HEATHER



HUNTER



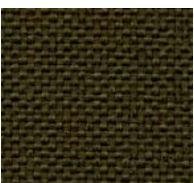
INDIGO



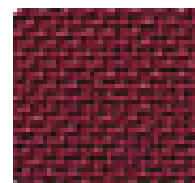
IVY LEAGUE



JADE



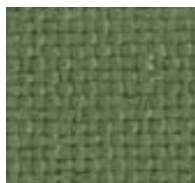
MAHOGANY



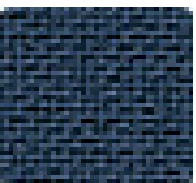
MAROON



MELON



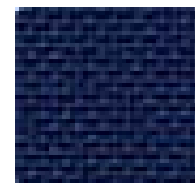
MOSS



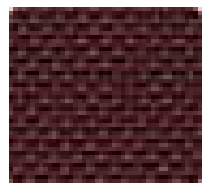
NAVY



NEWPORT



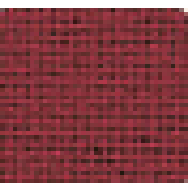
PURPLE VELVET



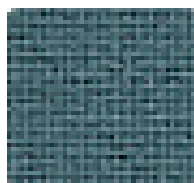
ROSEWOOD



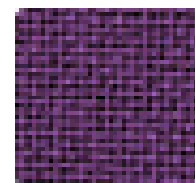
ROYAL



SCARLET



TEAL



VIOLA